

PART OF THE N.W. 1/4 OF SECTION 7, T.7N., R.1E., S.L.B. & M.
TIA SHAW SUBDIVISION

99

IN WEBER COUNTY

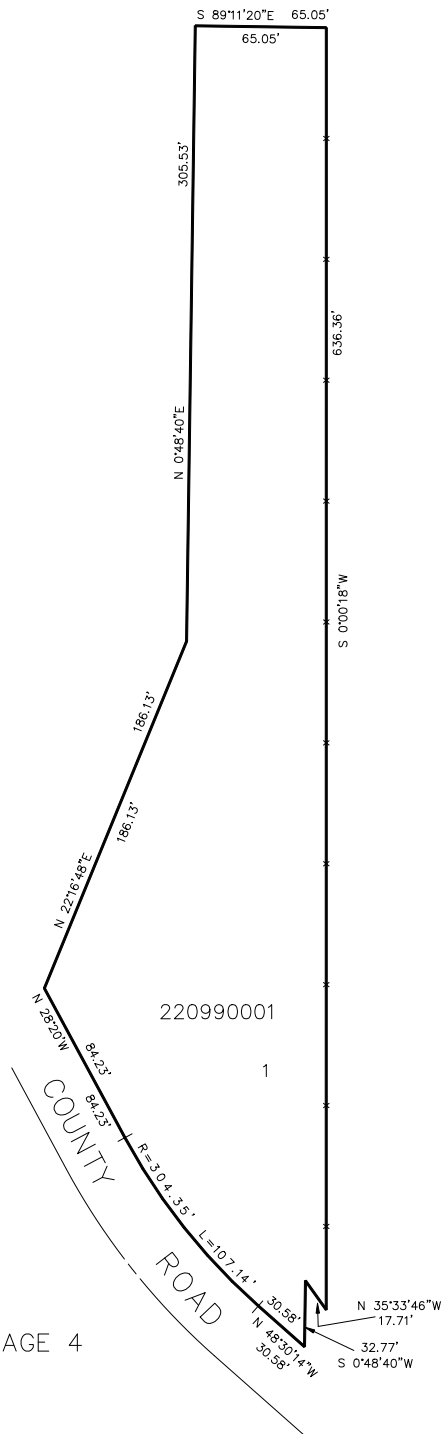
TAXING UNIT: 36

SCALE 1"=50'

SEE PAGE 4

SEE PAGE 4

SEE PAGE 4



FOR COMPLETE ENG. DATA
SEE ORIG. DED. PLAT IN
BOOK 29, PAGE 58.